

No. of Contacts	DIMENSIONS	
	A	B
1		2.54
2	2.54	5.08
3	5.08	7.62
4	7.62	10.16
5	10.16	12.70
6	12.70	15.24
7	15.24	17.78
8	17.78	20.32
9	20.32	22.86
10	22.86	25.40
11	25.40	27.94
12	27.94	30.48
13	30.48	33.02
14	33.02	35.56
15	35.56	38.10
16	38.10	40.64
17	40.64	43.18
18	43.18	45.72
19	45.72	48.26
20	48.26	50.80
21	50.80	53.34
22	53.34	55.88
23	55.88	58.42
24	58.42	60.96
25	60.96	63.50
26	63.50	66.04
27	66.04	68.58
28	68.58	71.12
29	71.12	73.66
30	73.66	76.20
31	76.20	78.74
32	78.74	81.28
33	81.28	83.82
34	83.82	86.36
35	86.36	88.90
36	88.90	91.44
37	91.44	93.98
38	93.98	96.52
39	96.52	99.06
40	99.06	101.60

Diagram	Molding description
○	mass production & assemble mold
⊙	sample & assemble mold
⊕	mass production & fix mold
⊗	sample & fix mold

XHCY-XXS-X-C/D-*

Pin type
 Brass
 Brass(Reel)
 Phosphor Bronze
 ◎Standard: L

Number of Contacts
 Straight

Pin Length mm

NULL: Thermoplastic(P.B.T)
 F: High Temperature Thermoplastic (Nylon-6T)

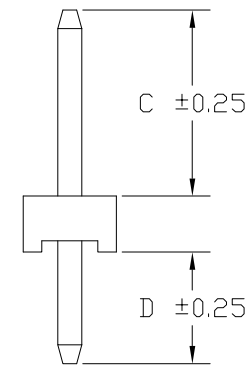
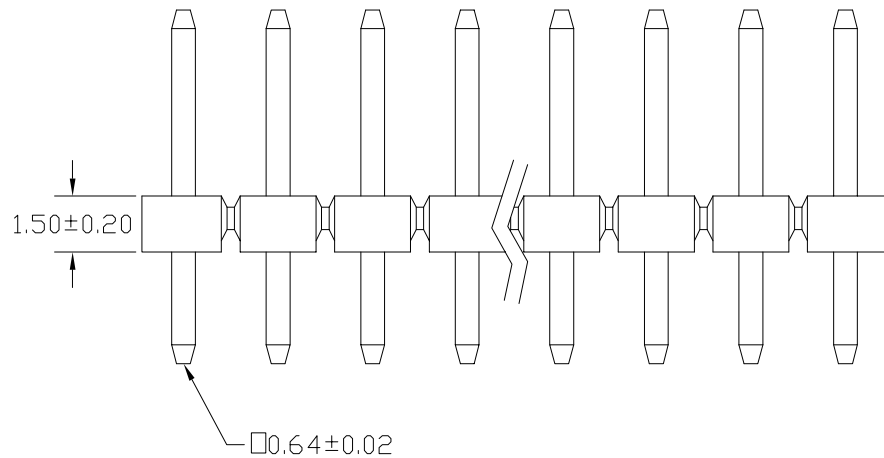
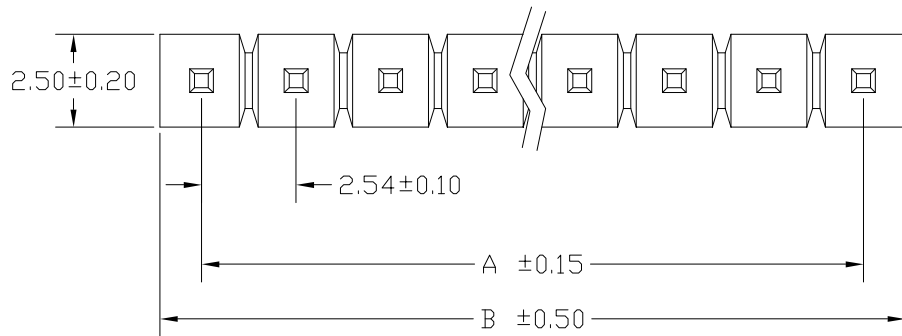
SPECIFICATIONS

Current Rating: 3 Amps
 Insulator resistance: 5000 Megohms Min.
 Dielectric withstanding: AC 500 V
 Operating Temperature: -40°~+105°C
 Contact Material: Copper alloy
 Insulator Material: Thermoplastic, UL 94V-0 or High Temperature (See P/N Option)

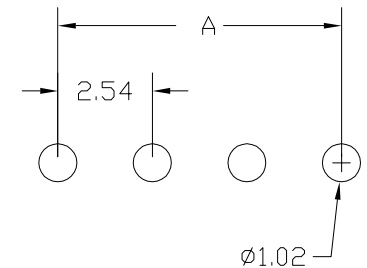
Definition	Code
◎ Tin plated:	A
◎ Gold plated:	
flash B 15μ" F	
10μ" E 30μ" J	
◎ Duplex plating:	
flash K 15μ" P	
10μ" N 30μ" U	
◎ Standard: B	
◎ Prefix 'V' means lead free plating.	

Finish: Tin, Gold or Duplex plated
 ◎ Standard: Gold flash all over
 ◎ Note:
 Duplex plating: gold plated on contact area, Tin on solder area

◎ For illustration purpose the XHCY-XXS-X-050/030 was shown
 ◎ Harmful material should be compliant to Doc."EI-0005"Standards.



Recommended PCB Layout (PCB TOLERANCE ±0.05)



Rev.	ECN Number	Description	Drawn	Date
15	EC2-550315	新增XHCY-XXS-X-025/030-*	陳顯鑫	05/30 05'
16	EC2-570006	新增XHCY-XXS-X-070/070-*	詹益東	07/05 05'
17	EC3-5C0034	新增XHCY-XXS-X-071/023-* 修改料號選項敘述	鄒遠祥/陳賜農	02/22'06

DWG. NO.	3-37	TITLE	2.54mm HEADER (成品規格圖)	REV.	17
F:\DWG\CDWG\HCY\HCYS1Q.DWG				SHEET	1/2
PARTS NO.	XHCY-XXS-X-C/D-*				

PLASTREN
 Plastron Precision Co., Ltd.
 樟翔精密股份有限公司

GENERAL TOLERANCE	
XX. ± 0.50	XXX. ±
X. ± 0.30	.XXX ±
.X ± 0.25	X.* ± 4°
.XX ± 0.20	.X.* ± 4°

SCALE	5=1
UNIT	MM
SIZE	A4

ORIGINAL DRAWN 洪銀雲
 CHECK 林錫錦
 APPROVE 林錫錦

DATE 18-07-03'
 DATE 02/22'06
 DATE 02/22'06

A B C D E W1-0901

PARTS NO.	C	D	REMARK (備註)	PARTS NO.	C	D	REMARK (備註)
XHCY-XXS-X-020/065-*	2.00	6.50	○	XHCY-XXS-X-084/000-*	8.40	0.00	
XHCY-XXS-X-025/025-*	2.50	2.50	○	XHCY-XXS-X-110/025-*	11.00	2.50	
XHCY-XXS-X-025/025-*	2.50	2.50		XHCY-XXS-X-156/030-*	15.60	3.00	○
XHCY-XXS-X-025/032-*	2.50	3.20		XHCY-XXS-X-166/030-*	16.60	3.00	
XHCY-XXS-X-026/030-*	2.60	3.00	○				
XHCY-XXS-X-027/034-*	2.70	3.40	○				
XHCY-XXS-X-027/043-*	2.70	4.30					
XHCY-XXS-X-028/020-*	2.80	2.00					
XHCY-XXS-X-030/030-*	3.00	3.00					
XHCY-XXS-X-034/027-*	3.40	2.70					
XHCY-XXS-X-034/028-*	3.40	2.80	○				
XHCY-XXS-X-035/030-*	3.50	3.00					
XHCY-XXS-X-038/023-*	3.80	2.30					
XHCY-XXS-X-038/025-*	3.80	2.50	○				
XHCY-XXS-X-040/025-*	4.00	2.50	○				
XHCY-XXS-X-040/030-*	4.00	3.00					
XHCY-XXS-X-040/030-*	4.00	3.00	○				
XHCY-XXS-X-040/035-*	4.00	3.50	○				
XHCY-XXS-X-040/040-*	4.00	4.00					
XHCY-XXS-X-042/030-*	4.20	3.00					
XHCY-XXS-X-045/025-*	4.50	2.50					
XHCY-XXS-X-047/023-*	4.70	2.30					
XHCY-XXS-X-047/030-*	4.70	3.00					
XHCY-XXS-X-050/030-*	5.00	3.00	○				
XHCY-XXS-X-056/030-*	5.60	3.00	○				
XHCY-XXS-X-056/031-*	5.60	3.10					
XHCY-XXS-X-060/030-*	6.00	3.00	○				
XHCY-XXS-X-060/060-*	6.00	6.00					
XHCY-XXS-X-065/030-*	6.50	3.00					
XHCY-XXS-X-067/030-*	6.70	3.00					
XHCY-XXS-X-070/030-*	7.00	3.00					
XHCY-XXS-X-070/070-*	7.00	7.00					
XHCY-XXS-X-071/023-*	7.10	2.30	○				
XHCY-XXS-X-073/027-*	7.30	2.70	○				
XHCY-XXS-X-076/030-*	7.60	3.00					
XHCY-XXS-X-079/030-*	7.90	3.00					
XHCY-XXS-X-080/030-*	8.00	3.00					



PLASTON
Plaston Precision Co., Ltd.
博翔精密股份有限公司

GENERAL TOLERANCE		SCALE		ORIGINAL DRAWN		DATE	DWG. NO.	TITLE	REV.
XX ± 0.50	XXX ±	5=1	MM	CHECK	洪銀雲	18-07-'03'	F:\DWG\CDWG\HCY\HCYS1Q.DWG	2.54mm HEADER (成品規格圖)	17
X ± 0.30	.XXX ±	UNIT	MM	APPROVE	林錫錦	02/22'06	PARTS NO.		SHEET
X ± 0.25	X° ± 4°	SIZE	A4		林錫錦	02/22'06	XHCY-XXS-X-C/D-*		2/2
XX ± 0.20	X° ± 4°								

A B C D E FM-0524